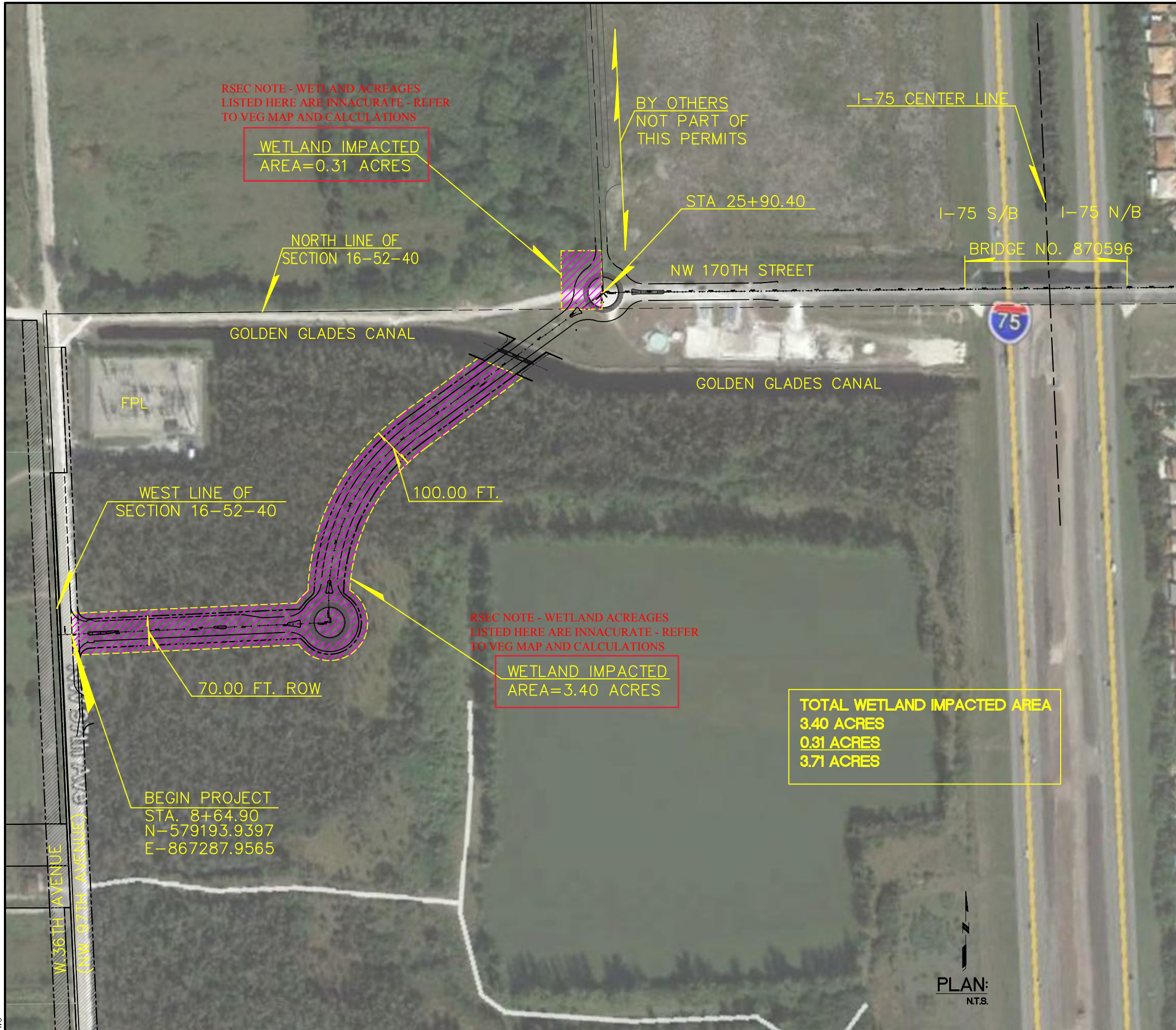


F:\ENGINEERING\SRS PROJECTS\2015\1509 - NW 170 STREET\APPLICATIONS & PERMITS\WETLAND\WETLAND IMPACTED AREA NEW.DWG



RSEC NOTE - WETLAND ACREAGES LISTED HERE ARE INNACURATE - REFER TO VEG MAP AND CALCULATIONS

WETLAND IMPACTED AREA=0.31 ACRES

BY OTHERS NOT PART OF THIS PERMITS

I-75 CENTER LINE

STA 25+90.40

I-75 S/B I-75 N/B

BRIDGE NO. 870596

NORTH LINE OF SECTION 16-52-40

NW 170TH STREET

GOLDEN GLADES CANAL

GOLDEN GLADES CANAL

FPL

WEST LINE OF SECTION 16-52-40

100.00 FT.

RSEC NOTE - WETLAND ACREAGES LISTED HERE ARE INNACURATE - REFER TO VEG MAP AND CALCULATIONS

WETLAND IMPACTED AREA=3.40 ACRES

70.00 FT. ROW

TOTAL WETLAND IMPACTED AREA
3.40 ACRES
0.31 ACRES
3.71 ACRES

BEGIN PROJECT
STA. 8+64.90
N-579193.9397
E-867287.9565

W. 36 TH AVENUE
(NW 97TH AVENUE)



REV.	DATE	BY:	DESCRIPTION

DESIGNED BY:	J.C.F.
DRAWN BY:	P.B.
CHECKED BY:	I.S.
DATE:	10/2016

SEAL:	
-------	--

SRS
ENGINEERING, INC.
CONSULTING ENGINEERS

5001 Southwest 74th Court, Suite 201
Miami, Florida 33155-4453
TEL. 305-662-8887, FAX 305-662-8858
WWW.SRS-CORP.COM

EB-00007317

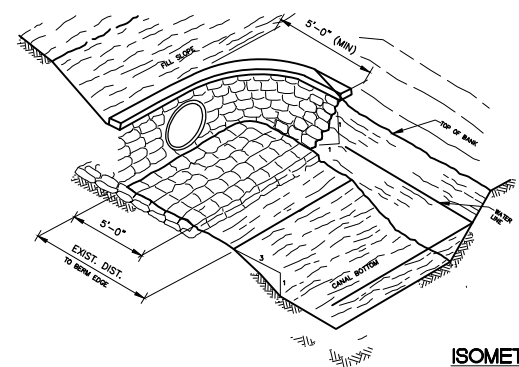
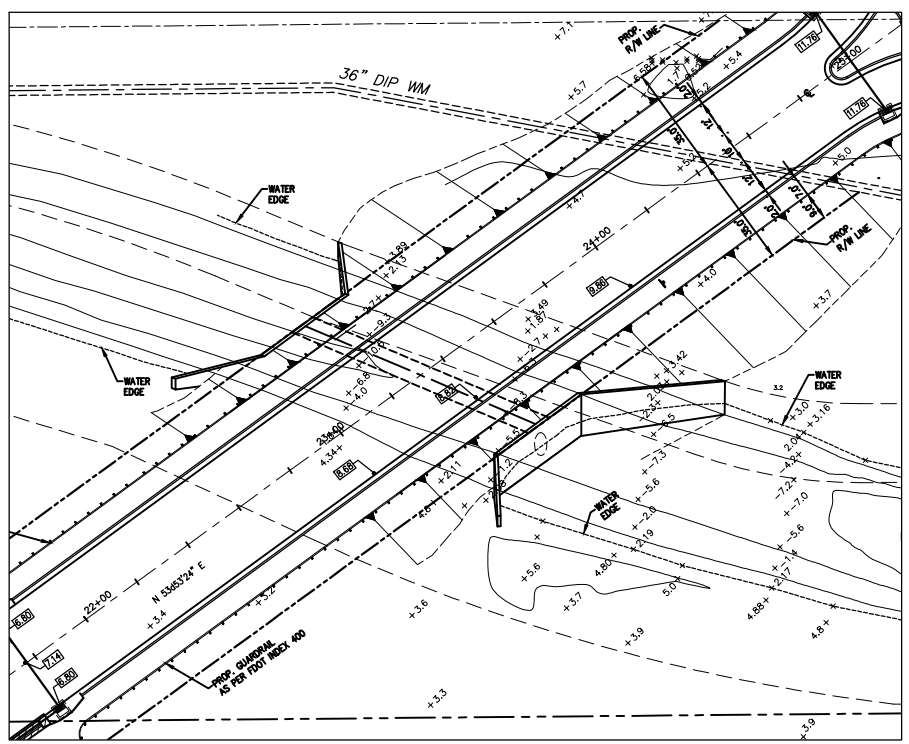
CITY OF HIALEAH
ROADWAY AND DRAINAGE IMPROVEMENTS
NW 170TH STREET AND CONNECTOR ROAD
BETWEEN NW 97TH AVENUE AND NW 170TH STREET

WETLAND IMPACTED AREA PLAN

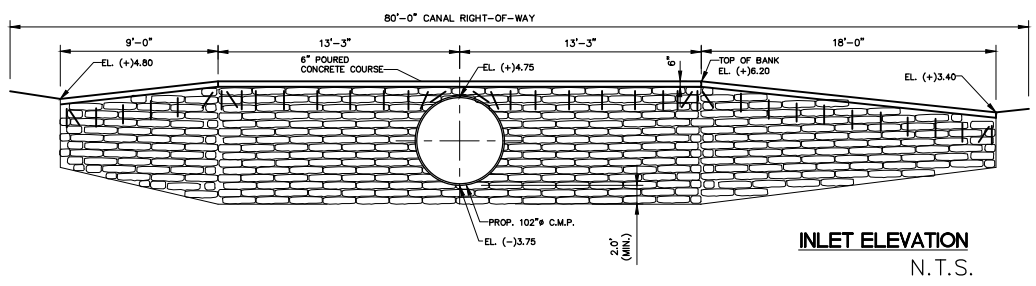
SCALE:	AS SHOWN
PROJECT NO.:	1509
DWG. NO.:	1509C-1
SHEET:	C-1

THE USE OF THESE PLANS AND SPECIFICATIONS SHALL BE RESTRICTED TO THE ORIGINAL SITE FOR WHICH THEY WERE PREPARED AND PUBLICATION HEREOF IS EXPRESSLY LIMITED TO SUCH USE. REPRODUCTION OR PUBLICATION BY ANY METHOD, IN WHOLE OR IN PART, IS PROHIBITED. VISUAL CONTACT WITH THESE PLANS AND SPECIFICATIONS SHALL CONSTITUTE FRAUD. EVIDENCE OF THE ACCEPTANCE OF THE RESTRICTIONS.

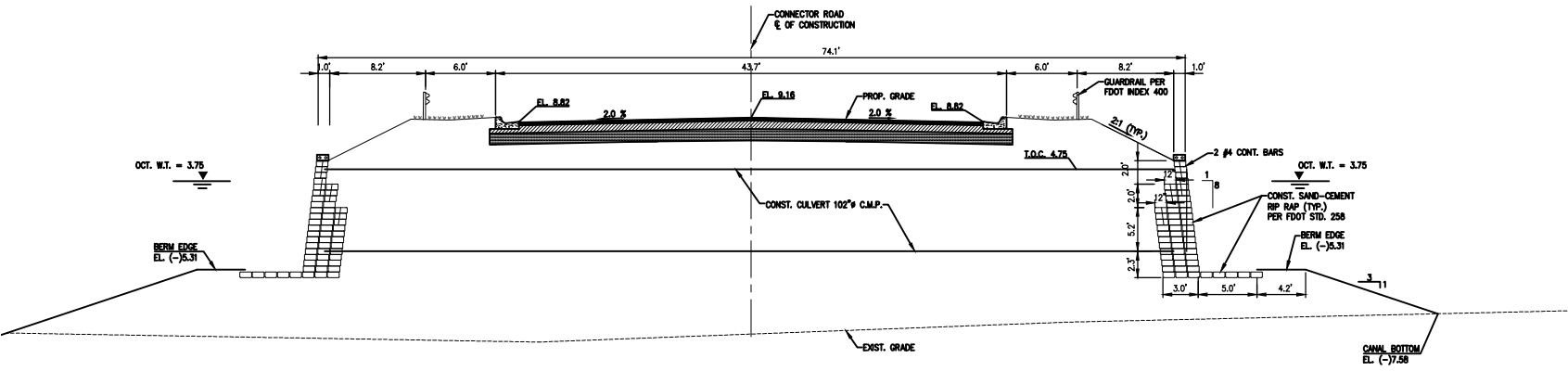
F:\Engineering\SRS Projects\2015\1509 - NW 170 Street\Design\C-30 CULVERT.dwg, 2/17/2017 11:43:22 AM, JCFontaineau
 F:\Engineering\SRS Projects\2015\1509 - NW 170 Street\DESIGN\C-30 CULVERT.DWG



ISOMETRIC



INLET ELEVATION
N.T.S.



CULVERT PROFILE
1\"/>

DESIGNED BY:	J.C.F.	SEAL:	
DRAWN BY:	P.B.		
CHECKED BY:	I.S.		
DATE:	10/2016		

REV.	DATE	BY:	DESCRIPTION



CITY OF HIALEAH
ROADWAY AND DRAINAGE IMPROVEMENTS
NW 170TH STREET AND CONNECTOR ROAD
BETWEEN NW 97TH AVENUE AND NW 170TH STREET

CULVERT PLAN, PROFILE
AND DETAILS

SCALE:	AS SHOWN
PROJECT NO.:	1509
DWG. NO.:	1509C-5
SHEET:	C-30

THE USER OF THESE DRAWINGS AND SPECIFICATIONS SHALL BE RESPONSIBLE FOR THE ACCURACY OF THE INFORMATION OF THE CONTRACTOR. THE USER OF THESE DRAWINGS AND SPECIFICATIONS SHALL BE RESPONSIBLE FOR THE ACCURACY OF THE INFORMATION OF THE CONTRACTOR.

Site Photographs

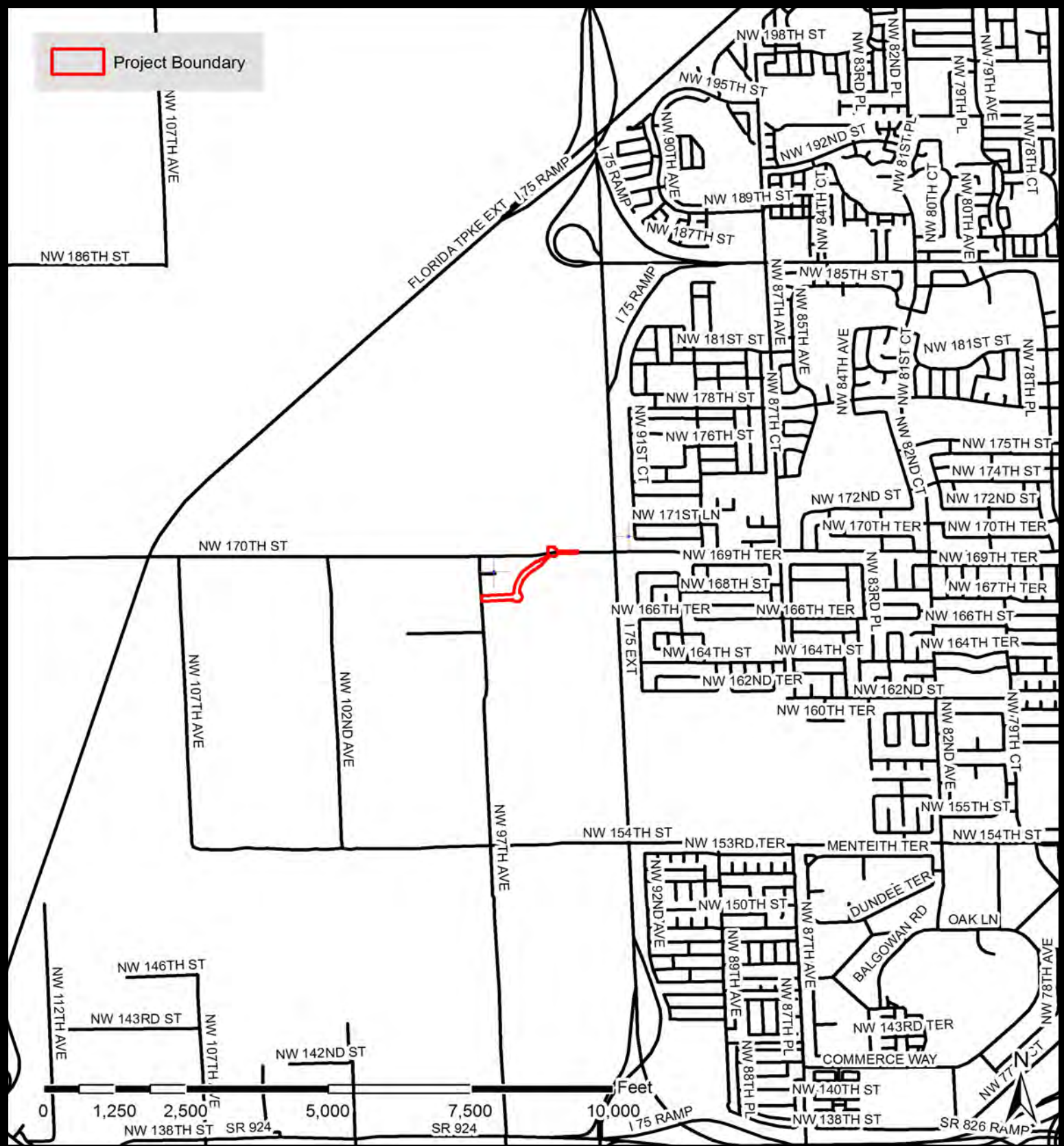


Photo 1 – Dense exotic vegetation and scattered native ground cover present.



Photo 2 – Dense exotic vegetation found throughout.

Project Boundary




NW 170th Street
MIAMI-DADE COUNTY, FLORIDA



RS Environmental Consulting Inc.
P.O. Box 161158
Miami FL, 33116
Phone: 305-383-3404
www.rs-env.com

Vicinity Map
T-52S, R-40E, S-9
T-52S, R-40E, S-16

DRAWN BY: LVK	DATE: 10/25/2016
CHECKED BY: RWS	SCALE: As Shown

 Project Boundary

NW 170TH ST

NW 169TH ST

NW 97TH AVE

0 125 250 500 750 1,000 Feet



NW 170th Street
MIAMI-DADE COUNTY, FLORIDA



RS Environmental
Consulting Inc.
P.O. Box 161158
Miami FL, 33116
Phone: 305-383-3404
www.rs-env.com

2014 Aerial

Location Map
T-52S, R-40E, S-9
T-52S, R-40E, S-16

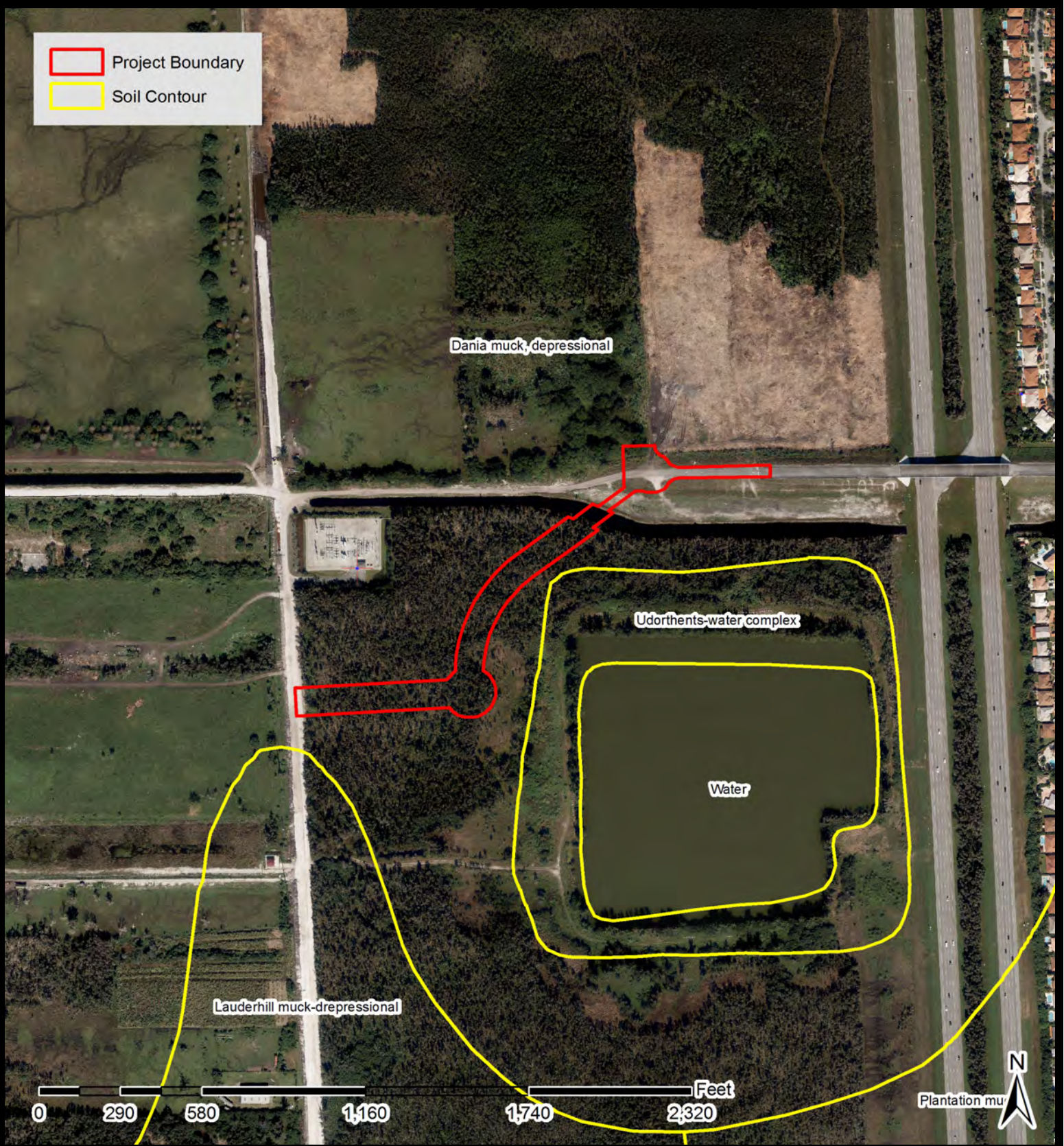
DRAWN BY: LVK

DATE: 10/25/2016

CHECKED BY: RWS

SCALE: As Shown

 Project Boundary
 Soil Contour



NW 170th Street
 MIAMI-DADE COUNTY, FLORIDA






RS Environmental
 Consulting Inc.
 P.O. Box 161158
 Miami FL, 33116
 Phone: 305-383-3404
www.rs-env.com

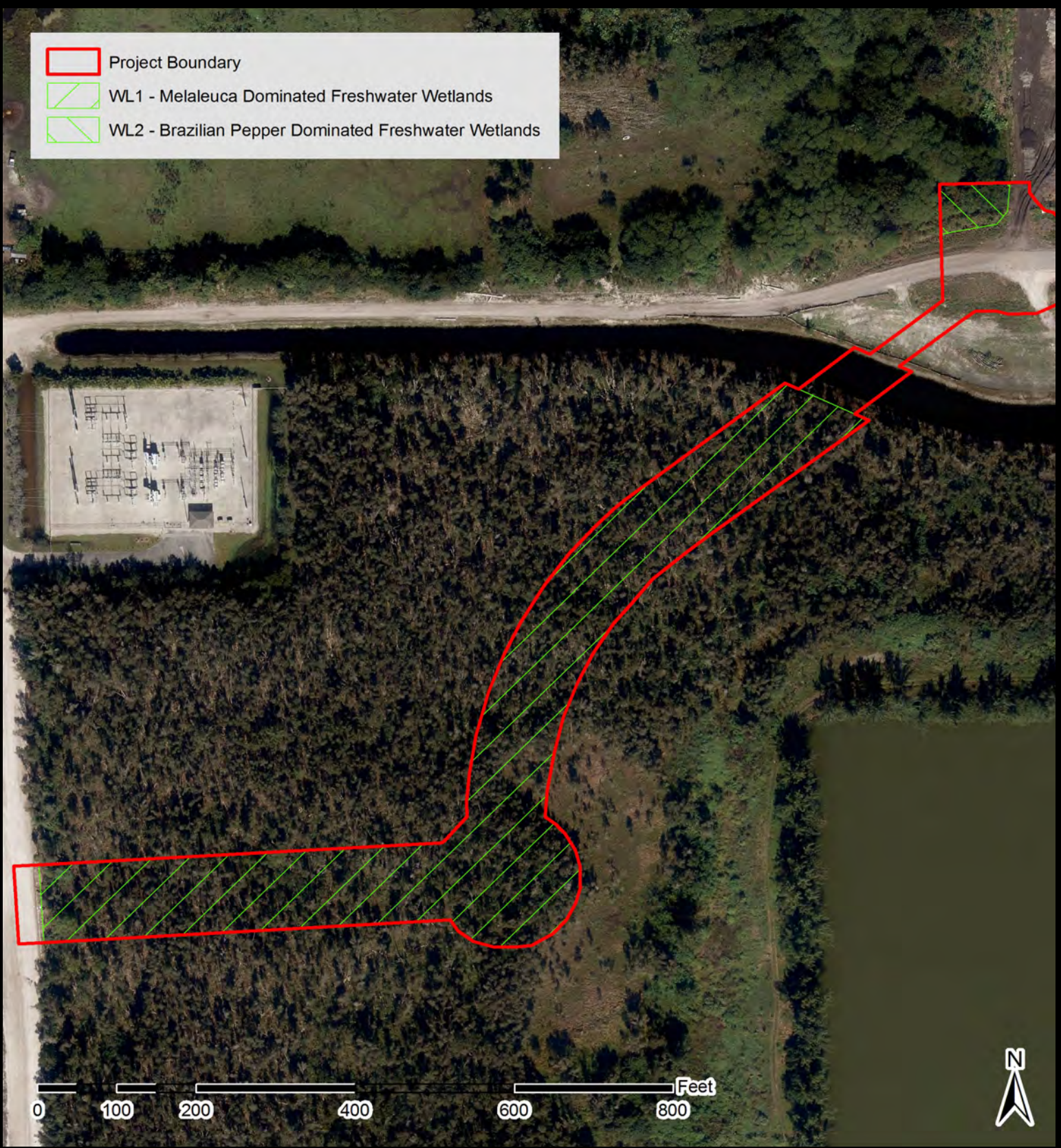
2014 Aerial

Soils Map
 T-52S, R-40E, S-9
 T-52S, R-40E, S-16

DRAWN BY: LVK
 CHECKED BY: RWS

DATE: 10/25/2016
 SCALE: As Shown

-  Project Boundary
-  WL1 - Melaleuca Dominated Freshwater Wetlands
-  WL2 - Brazilian Pepper Dominated Freshwater Wetlands







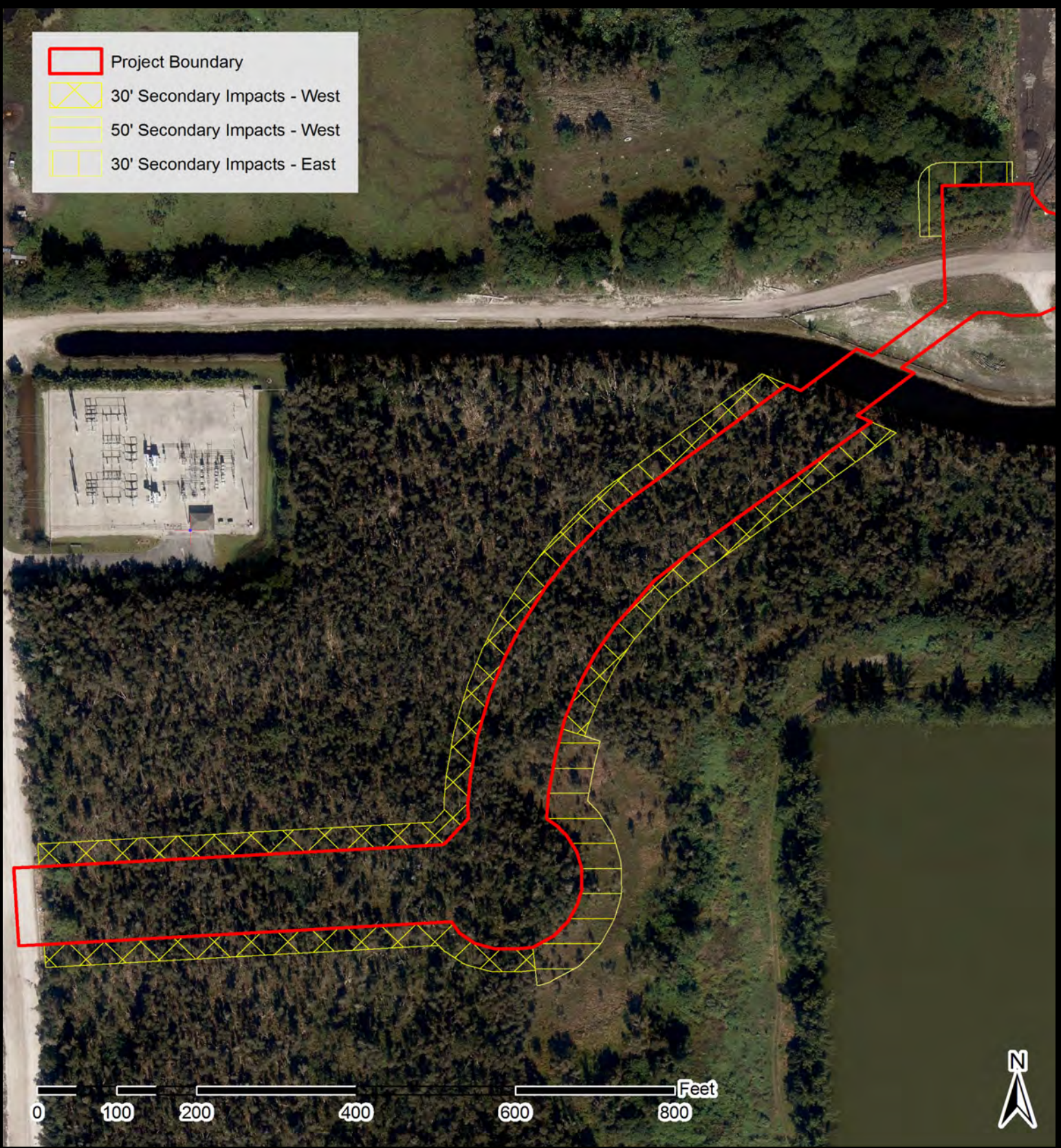
NW 170th Street
 MIAMI-DADE COUNTY, FLORIDA



RS Environmental Consulting Inc.
 P.O. Box 161158
 Miami FL, 33116
 Phone: 305-383-3404
www.rs-env.com

<small>2014 Aerial</small>	
Wetland ID Map T-52S, R-40E, S-9 T-52S, R-40E, S-16	
DRAWN BY: LVK	DATE: 10/25/2016
CHECKED BY: RWS	SCALE: As Shown

-  Project Boundary
-  30' Secondary Impacts - West
-  50' Secondary Impacts - West
-  30' Secondary Impacts - East



NW 170th Street
 MIAMI-DADE COUNTY, FLORIDA



RS Environmental Consulting Inc.
 P.O. Box 161158
 Miami FL, 33116
 Phone: 305-383-3404
www.rs-env.com

2014 Aerial

Secondary Impacts Map
 T-52S, R-40E, S-9
 T-52S, R-40E, S-16

DRAWN BY: LVK
 CHECKED BY: RWS

DATE: 10/25/2016
 SCALE: As Shown